



Perry Public Library

2026 Budget Hearing
May 22nd, 2025
7:00 pm

Perry Public Library

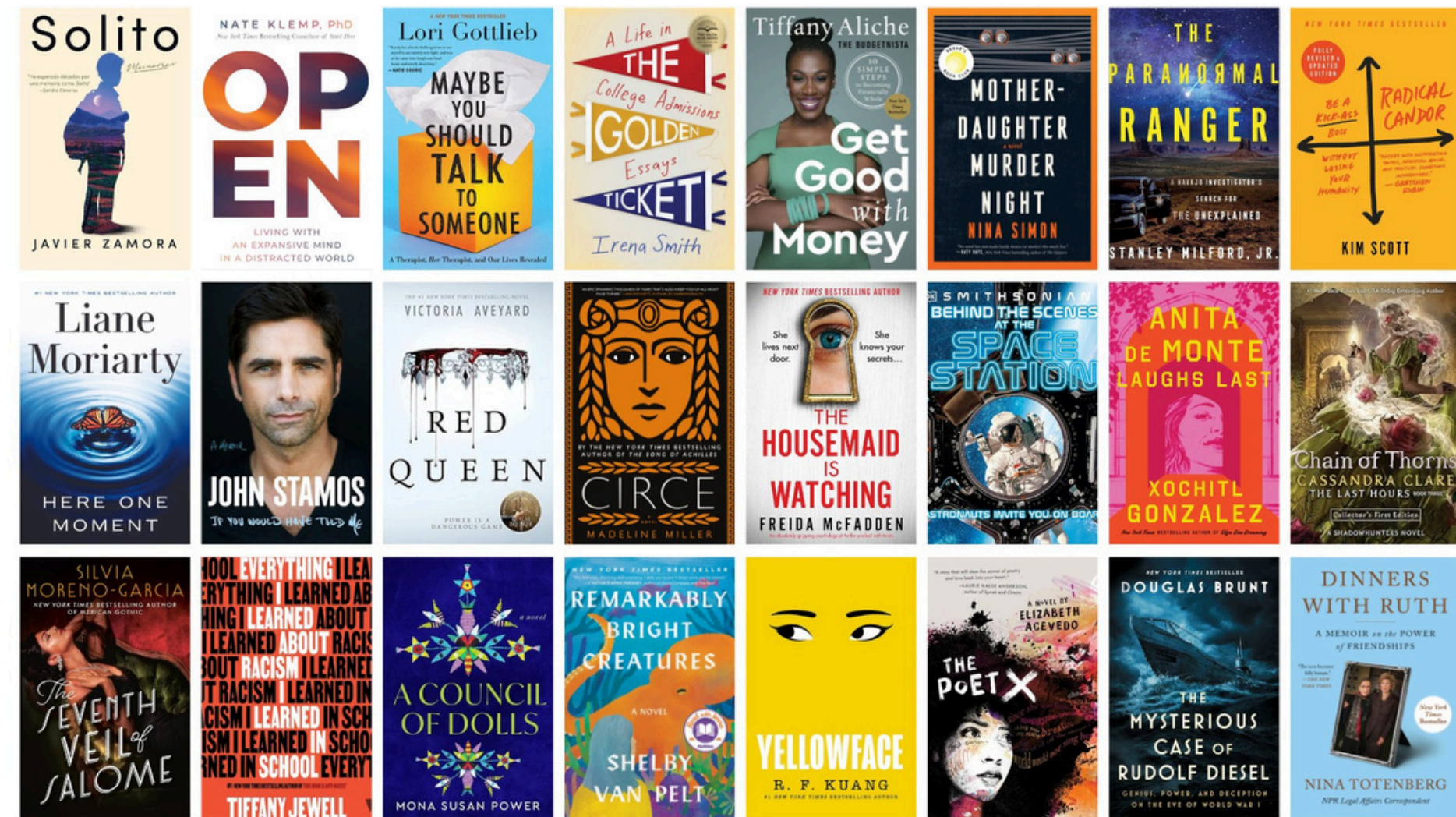


- A School District Public Library, chartered to serve the residents of Perry Central School District
- School District Public Libraries are totally independent of the School District
- Trustees are subject to an open election process
- The Library Board has the authority to schedule a vote on a library budget each year.



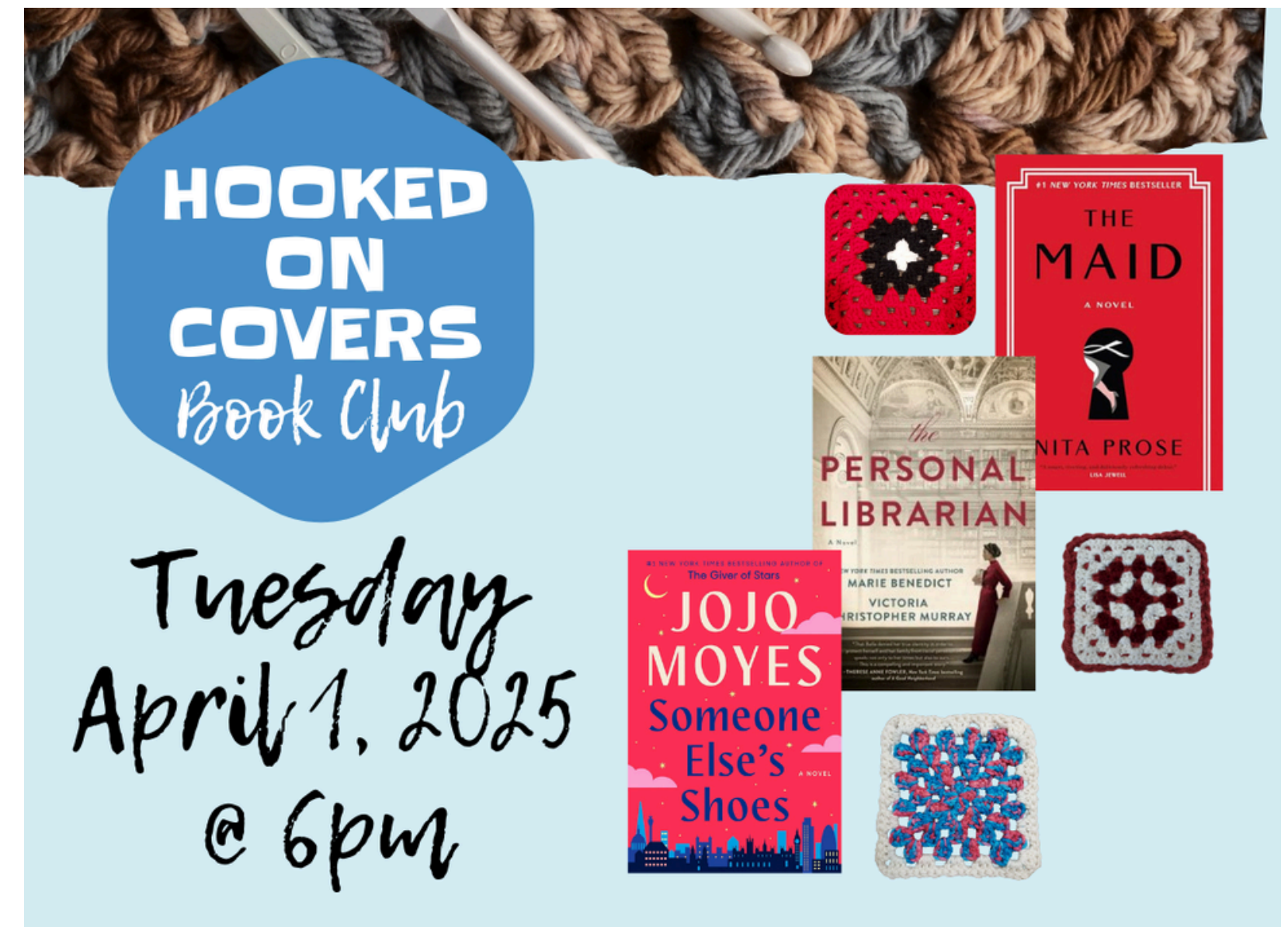
Programs offered

Variety of in-person and virtual programming for all ages.



2024-2025 Grants & Awards

- Perry Herald Digitization Project-- Rochester Regional Library Council (continues from 2024)
- \$3,434 for Hooked on Covers -- Arts Council for Wyoming County regrant
- \$2,500 Safety Classes, Babysitter Training, Home Alone Class, First Aid/AED/CPR Training--Perry Rotary
- \$30,000 Bullet Aid from Assemblymember Marjorie Burns



\$35,934

2024 Highlights



2,835

Computer Sessions



3,994

Program Attendance
In-Person



13,026

Library Visitors



3,277

Program Attendance
Virtual



8,748

Books to and from
partner libraries



32,474

Materials Checked Out

Figures from 2024 Annual Report



ROI

\$766,970+

Programming & Circulation

***Does not include meeting room space,
reader's advisory, connections**

Based on Figures from the 2024 Annual Report and the
Library Value Calculator from Maine State Library

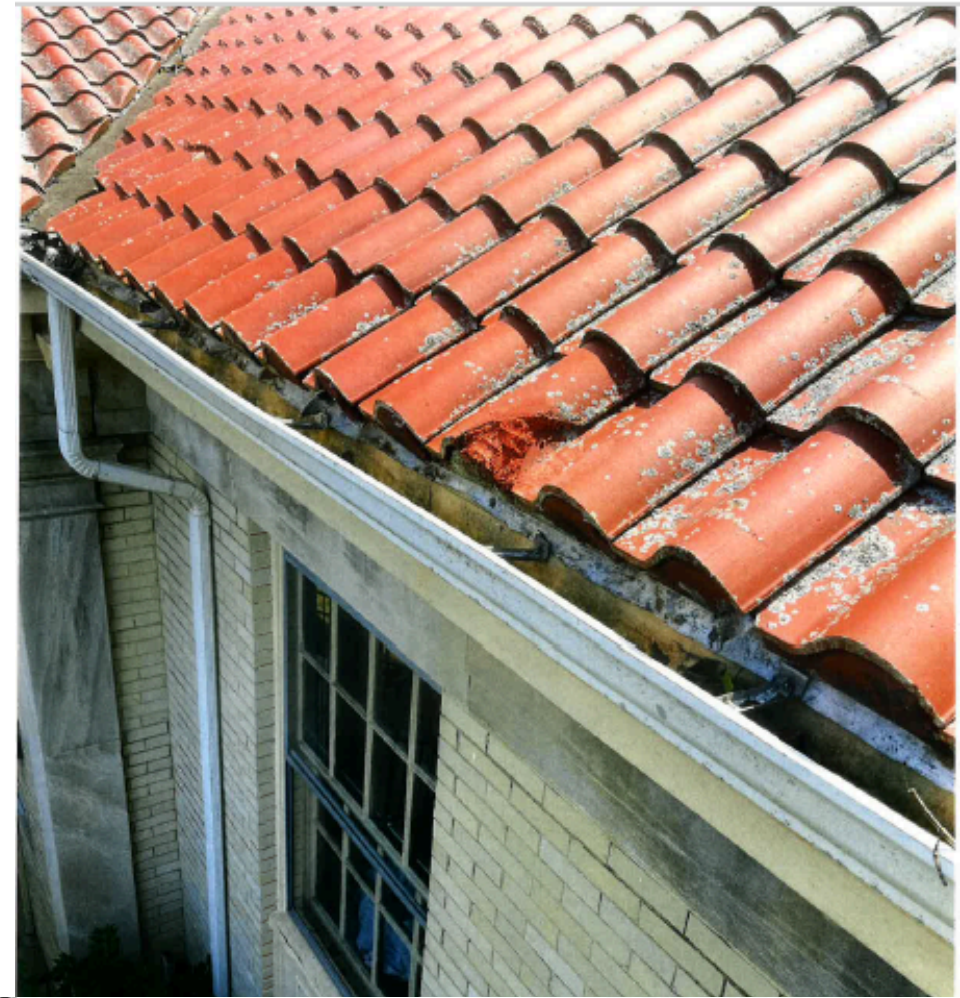
2025 Projects

- **Business Promotion Space**
- **2026 to 2031 Long Range Plan**
- **Vox Books**
- **More to Come!**



2024–2025 Building Repairs

- Upgraded Fire & Burglary Alarm
- Building Condition Survey & Elevator Feasibility Study
- Security Camera Installation
- Gutters/Eaves Project



Rising Costs

- Historic building in need of constant maintenance and repairs
- New York State minimum wage & salary increases, and benefits
 - Increase in December 2025 for 2026

Priorities

- Increase spending on materials of all types
 - Addition of more Vox Books & Museum Passes
- Begin working on priorities identified on the Building Condition Survey currently underway
- Continue building reserve funds so we are better able to plan for large repairs/replacements

2025 Proposed Budget- Income

Income	2025 Budget	2026 Budget
LLSA/OWWL Library	\$2,200	\$2,200
Book Sales	\$15	\$15
Friends of Perry Library	\$1,000	\$1000
Grants, Memorials & Gifts	\$1,000	\$1000
Interest	\$1000	\$1000
Library Charges-Coffee, Copies, Fines	\$1,850	\$1,850
Perry Central School District	\$275,000*	\$310,500
Rollover from Previous	\$3,900	\$0
Total Income	\$285,965	\$317,565

*We were able to replace
the boiler in 2024

2026 Proposed Budget– Expenditures

Expenditures	2024 Budget	2025 Budget
Contract with Library System	\$6,631	\$6,900
Equipment	\$4,000	\$5,800
Office Supplies	\$1,500	\$1,500
Programming Supplies	\$4,500	\$5,500
Continuing Education	\$3,000	\$3,000
Travel	\$600	\$700
Other Misc.	\$100	\$100
Postage	\$400	\$500
Audit	\$3,500	\$0
Payroll Services	\$2,600	\$3,500

2026 Proposed Budget–Expenditures Cont.

Expenditures	2025 Budget	2026 Budget
Professional Fees	\$1,600	\$1,600
Publicity & Printing	\$2,500	\$2,500
Telecommunications	\$1,700	\$1,850
AV Materials	\$1,500	\$1,500
Library Materials (Electronic Format)	\$2435	\$2510
Books	\$10,000	\$12,000
Periodicals	\$1,000	\$1100

2026 Proposed Budget– Expenditures Cont.

Expenditures	2025 Budget	2026 Budget
Building Insurance	\$7,500	\$9000
Building Staff-Cleaning	\$4,600	\$4,800
Custodial Supplies	\$835	\$950
Fuel & Utilities	\$9,500	\$10,000
Landscaping	\$200	\$200
Maintenance Contracts	\$5,000	\$6,500
Repairs to Building	\$4213*	\$17500

*We were able to replace the boiler in 2024

2026 Proposed Budget– Expenditures Cont.

Expenditures	2025 Budget	2026 Budget
Employer Taxes- Disability, Medicare, OASDI, Unemployment, Workers' Comp	\$16,145	\$17,675
Health Insurance	\$8,500	\$9,250
State Retirement	\$17,000	\$19,000
Clerical Staff	\$55,290	\$60464
Library Director	\$62316.80	\$64810
Youth Services Librarian	\$44,128.50	\$46020
Transfer to Reserves	\$3,060	\$3120
Total Expenditures	\$291,004	\$317,565

2026 Proposed Budget

- Additional \$10,500 requested.
- Brings the Library's tax appropriation from \$300,000 to \$310,500.
- An increase of 3.5%
- An average increase of \$2.80 on the tax bill for a \$150,000 home annually.
 - Based on previous assessment values

Trustee Candidates

- Board consists of seven (7) members, elected for terms of three (3) years each.
- Eligibility limited to residents of the Perry Central School District for one year prior to the vote, a citizen of the United States, and at least 18 years of age.
- Nominating petition signed by 25 qualified voters of Perry Central School District.
- Petitions were due by 8pm on Monday, May 12th.

Trustee Candidates

We have 2 open seats on the board, and candidates that will appear on the ballot are:

- Virginia Winter
- Lorie Ames

Voter Requirements

- Resident of the Perry Central School District for at least 30 days
- 18 years or older
- U. S. Citizen